



FORBUILD



COMMERCIAL OFFER

PRODUCTION / SALE / LEASE

GRAPHIC SYMBOLS USED IN THE CATALOGUE



POSSIBLE LEASE

The product is also offered in the form of lease.

■ TABLE OF CONTENTS



1. PRODUCTS 5

■ Concrete reinforcement bended BINDAX	6
■ Screwed reinforcement BARTEC	7
■ MURO-BET sets	8
■ UNITEC system	8
■ Balcony connectors KP and KPE	9
■ Sealing systems	10
■ VALERO formwork mats	13
■ OMEGA dilatation profiles	13
■ Construction equipment	14
■ Products and equipment to construction of the bridges	16
■ Structural bearings	17
■ SECUMAX protection systems	18
■ Formwork accessories	20
■ Distance spacers	22
■ Precast accessories	23
■ Lost formworks	24
■ Light lost formworks	25
■ Chemistry to concrete	26



2. LEASE OF THE EQUIPMENT 27

■ Lease of the mounting trolleys	28
■ Lease of the SECUMAX protection system	29
■ Lease of the unloading platform	30
■ Lease of the container for concrete	30

ABOUT THE COMPANY

The company beginnings were in 1998, when we established our company. Intensive development of the company could be seen from the beginning of its existence. First main step was building of the sales network. Modern technologies and solutions, known at that time in Western Europe quickly found interest in our country. To introduce the company on the stock exchange in April 2009 there was changing legal form of the company in public company. In April 2013 the company made its debut on the New Connect the Stock Exchange in Warsaw. Long-term strategy of development assumed the company's expansion into foreign markets and for this the company needed a new name and symbol of a global nature. Because of that in year 2015 there was changing the name of the company on FORBUILD. Evidence of continuous dynamic development is a steady increase in enterprise value. At present moment the company has strong position on the polish market and employs about 200 employees.

FORBUILD provides construction in material, products and construction equipment the highest quality. In our company we constantly care to expanding and adapting our offer to the changing market to meet requirements of our present and future clients. We provide products with high technological advancement, used in the construction of complicated engineering objects. We constantly complement our offer of basic products needed on each construction site. This is undoubtedly an advantage for our clients, who expected complex services and the limited number of suppliers.

FORBUILD company's activity cover four main areas: production, selling, lease of the equipment and mounting services of the own products and offered technologies. Our products are used in most sectors of construction, starting of environment protection, by industry, infrastructure, to retail and service and office construction. Present retail and service character of the company, thanks to financial resources gained from the issue of shares and starting its own production in 'Starachowice' Special Economic Area, it gradually changes in production, retail and service character. The own production is at present moment about 36 % in the selling structure and its share all the time increasing.

The key FOURBILD products include: Concrete reinforcement bended BINDAX system, screwed reinforcement system BARTEC, balcony connectors, formwork accessories and products and equipment to building the bridges. The special place in our range of the product take dilatation systems and sealing systems. The company is engaged in lease of the equipment, among them dominates the author's protection system on the edge SECUMAX, used to performing temporary security protected people by fall from a height.



Headquarters of the company in Końskie

Introducing on the construction market advanced and innovative technological solutions, resulted in the need to create professional assembly teams. Their formation has enabled complement and extend the company's offer. At present moment our assembly teams provide services from installation sealing systems, dilatation profiles, bridge bearings and Health and Safety equipment on the biggest constructions in the whole country.

At present moment we operate in 4 regions: Central-East, South, North-West and the North. Except the main warehouse in Końskie we have offices and regional warehouses in Warsaw, Gdańsk and Sosnowiec. Extensive sales network give us possibility of better contact to our clients, let us currently react on their needs and let for faster realization of orders. Besides expansion of the domestic sales network we created Export Department. We create also Realizations of Investment Department., what was the result of increasing quantity of realized mounting jobs.

Our goal is high quality of offered products and services, proofed by tests, certificates and technical approvals. Since years we implement new ideas and solutions, as evidenced by n products with registered utility and industrial models. We make efforts to our clients always can get in our company professional support.

Quality control and professional help of engineers from Technical Consulting and Designing Departments causing that we are seen as a reliable partner. In the FORBUILD company you may find people always willing to cooperate.

We provide the technology, experience and high quality.
Building with us ensures success

FORBUILD SA



PRODUCTS



Concrete reinforcement bended BINDAX

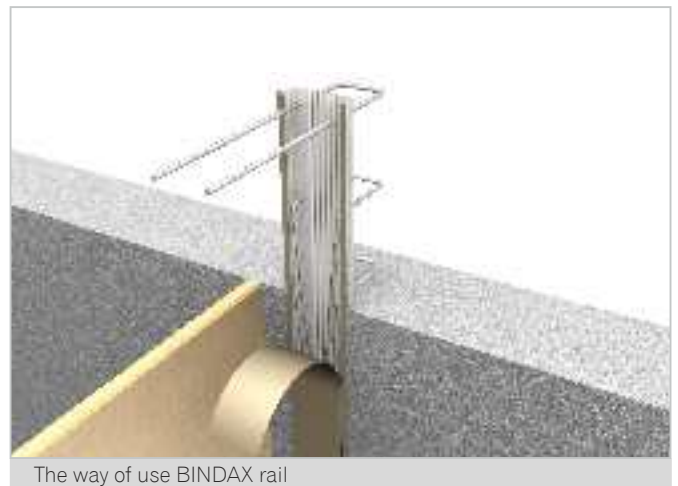


PRODUCT DESCRIPTION

Concrete reinforcement bended BINDAX is used to perform vertical and horizontal connections of the elements of reinforced concrete constructions, concreted in stages and the precast elements.

Use of connecting set BINDAX ensures fulfillment all requirements specified by standards for proper form of contact anastomosis. Standards for design concrete constructions assume that with the correct shape of the joint we can treat the construction element as homogeneous and permanently compound.

BINDAX sets are composed of the longitudinal steel profiles (rails) made by perforated, galvanized steel plate. Ribbed reinforcing bars are embedded in the profiles. Reinforcing bars from one side of the profile form anchoring loops, and from the other side- are bent to it and covered by the thick plastic tape.



The way of use BINDAX rail

ADVANTAGES

- simplified execution of constructing joints and additional concreting
- easy and fast assembly - the element is nailed
- maintain continuity of reinforcement bars
- perforated rail provide correct preparing joining surface on the connection of two elements
- shape of the rail with optimally shaped furrow (indentation) guarantees transfer shear forces occurring in the joint
- guarantee correct thickness of the concrete cover
- performance of the rail from galvanized steel plate
- construction of the rail provides stability during concreting and protect by permeation of the concrete inside the profile
- protection of reinforcement bars plastic tape; perforation of the tape allows for its quick removal and starting further reinforcement works
- possibility of performing non-standard elements on inquiry

APPROVALS AND CERTIFICATES

Technical approval No. AT-15-3793/2014 published by ITB Warsaw



Screwed reinforcement BARTEC



PRODUCT DESCRIPTION

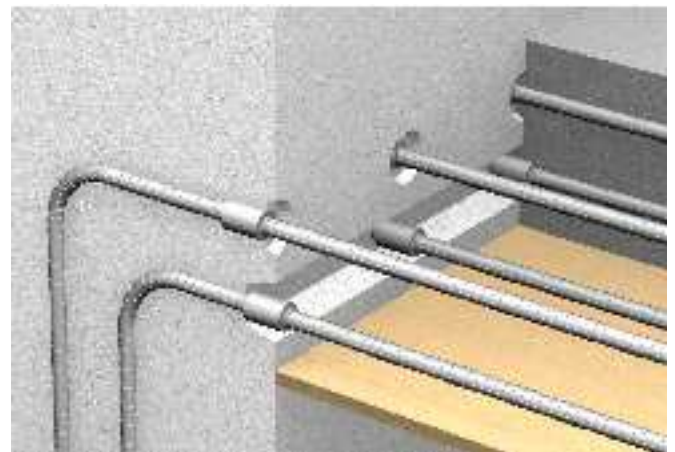
The elements of BARTEC system are intended to performing:

- mechanical joining (screwing) reinforcing bars,
- in the diameter range from 12 to 40 mm,
- anchoring reinforcement in the concrete reinforcement constructions
- anastomoses reinforcement bars to the steel structure.

The whole system consists of galvanized bars, connecting sleeves and additional (complementary) elements.

Computational bearing capacity of joints reinforcement bars, made by using BARTEC connectors, you should take equal resistance of the used rods. In practice it means that reinforcement bar connected to BARTEC joints we treat as continuous on the entire length.

Screwed reinforcement system BARTEC generally is used as of the reinforcement bars on the element's length or in the place of the construction joints in concreting.



Example of use BARTEC

ADVANTAGES

- possibility of making connection directly on the building place with using container mobile set of devices
- connections allow on having full bearing capacity of the reinforcement bars at the connection
- possibility making connection two bars in two different diameters (reduction connection)
- possibility connection to steel construction (welded connection)
- decreasing of using material (steel)- without overlapping reinforcement bars
- multicolored marks the elements let us for easy identification of them

- easy and fast assembly – not need to be use dynamometric wrench and any other equipment/tools
- possibility of making connection by unqualified employees, connection is making by the hand on the construction site
- optical control proper performance of connection

APPROVALS AND CERTIFICATES

- Technical Approval ITB No. AT-15-8331/2010
- Technical Approval IBDiM No. AT/2007-03-1128 (second edition)
- Certificate of Compliance ITB-1981/W



MURO-BET sets



PRODUCT DESCRIPTION

MURO-BET anchoring sets are used to connect to concrete construction of bricked wall feeling and bricked cladding facades containing air emptiness or thermal isolation.

Anchoring set MURO-BET consists of galvanized steel rail filled by styrofoam and flat steel plate anchors. During bricking works flat steel plate is set in concreting earlier rails and is pressed in (on the level of fugue walls). In this way we obtain full anchorage of the wall to the building support structure. On 1 meter high of the wall it's recommended to use four flat anchor.

ADVANTAGES

- it eliminates possibility uncontrolled brakes on the connection of the bricklaying elements to reinforcement concrete elements
- it eliminates possibility of the formation of scratches of bricked wall by the influence of settling structural elements
- certain anchoring bricked walls by the concrete elements easy and intuitive assembly



The anchoring set MURO-BET

MARKING

- CE Mark

UNITEC system



Example of the ready connection/joint in the UNITEC system

PRODUCT DESCRIPTION

Bushings UNITEC are used to connect reinforcement bars in the diameter range from 12 to 50 mm. The system consists of bushing with integrated clevis pins and screws, which quantity depend on diameter of reinforcement bar.

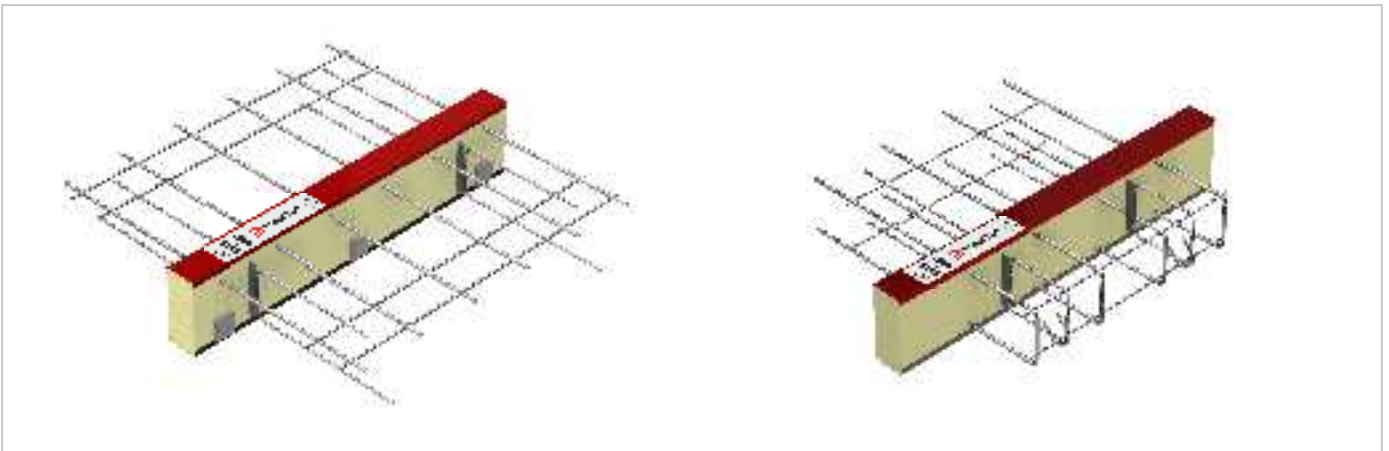
The UNITEC system is used to connect:

- exchanged, damaged fragments of the bars with intact bar structure
- bars of the new construction to the reinforcement of the existing part of the building
- bars in prefabricated elements

ADVANTAGES

- assembly by the help of ratchet or by the pneumatic wrench
- without necessity special preparing tip of the bar (i.e. rifling)
- connection without overlapping
- sleeve immediately ready to use

Balcony connectors KP and KPE



PRODUCT DESCRIPTION

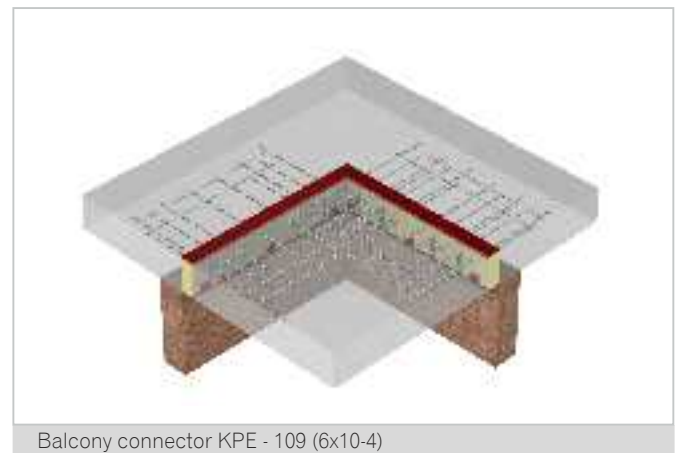
Balcony connectors KP/KPE are used to elimination of possibility of appearance thermal bridges and moving the dew point beyond the outline of the object.

Depending on the connector's type, reinforcement bars transmitting tensile forces are made by stainless steel or normal carbon steel hot-dip galvanized by the immersion method.

Both proposed solutions allow on effective and durable protection by the corrosion connector bars on the entire length and optimize construction costs, providing at the same time required construction durability.

Wide variety of elements allow on anchorage each type of the balcony independently from it statistical diagram (cantilevered balconies, corner balconies, loggias, attics, cornices etc.).

KP/KPE connectors can be used in monolithic technology and also in precast technology, they meet the high demands for the fire resistance class- till R120.



Balcony connector KPE - 109 (6x10-4)

ADVANTAGES

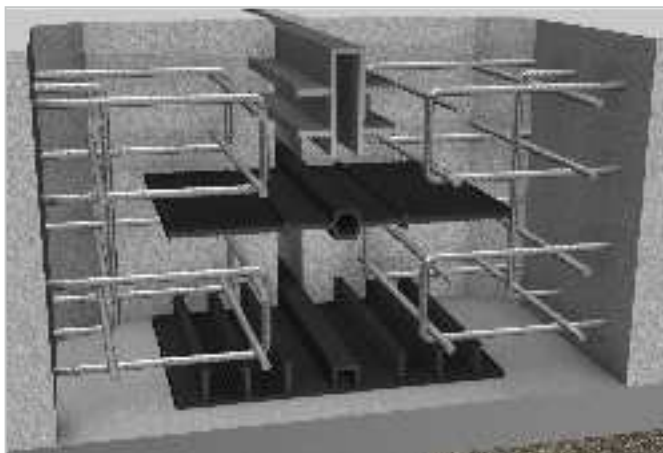
- elimination of the thermal bridges
- limiting possibility formation of fungal attack and mildew and the associated risks of health problems
- reduction costs of heating the building
- lack of necessity encapsulation balconies by the thermal insulation (balconies with the connectors KP/KPE are light and filigree)
- the shorter duration of the investment and costs connected by lying additional insulation- are reduced

APPROVALS AND CERTIFICATES

- Technical Approval ITB AT-15-9007/2012



Sealing tapes



SEALING TAPES

Sealing tapes are proven and reliable solution during sealing of the construction joints and expansion joints of the concrete/ reinforcement concrete constructions among the others in broadly defined housing construction, construction services, sewage treatments plants, swimming-pools, tanks for liquids and in communication building. Properly chosen and concreted sealing tape provides an effective barrier for pressing water. Wide variety of the products and long-term experience sealing works let us to use the tapes almost in each case.

Choosing the right tape is making by taking into account the:

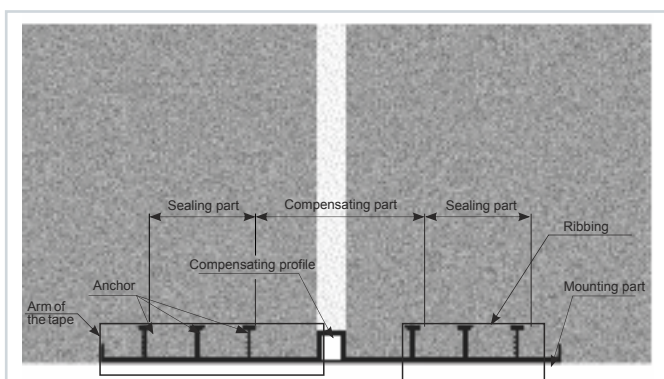
- type of sealed connection (expansion joints, technological joints)
- expected range of displacements (for strip joints)
- water pressure exerted on tape
- aggressive substances dissolved in water.

Due to the installation location for the construction there are:

- Tapes for construction joints:
 - inside
 - outside (simple and angular)
- Tapes for execution joints:
 - inside
 - outside (simple and angular)
 - closing and masking

APPROVAL AND CERTIFICATES

- Technical Approval ITB – No. AT-15-9126/2014
- Technical Approval – No. AT/2007-03-1319/3



FORBENT tape



PRODUCT DESCRIPTION

FORBENT swellable tape are used to making vertical and horizontal sealing construction joints in concreting, it's made on the basis of natural sodium bentonite, rubber and enriching additives or from thermoplastic elastomer. Properly concreted tape by the increase in volume, filling cavities and slit in concrete. Effectively seals construction joints exposed on moisture and groundwater, which are by the hydrostatic pressure up to 0,4 MPa, including tanks for drinking water.

FORBENT swellable tapes can be used as sealing of the connection old and new elements of the concrete and reinforcement concrete construction, in connections of the precast elements and also to sealing installations passages to the barrier of the construction.

APPROVALS AND ATTESTATIONS

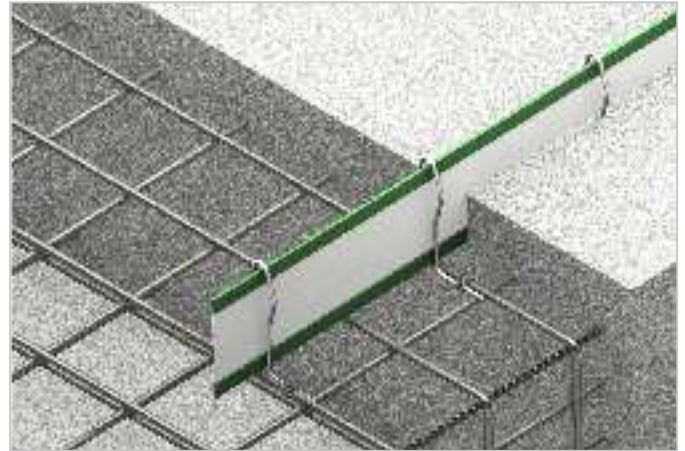
- Technical Approval ITB No. AT-15-9475/2015
- Hygienic Attestation.



Example of use FORBENT tape type S



BETOFLEX plate



PRODUCT DESCRIPTION

Sealing plate BETOFLEX is used as sealing construction joints in construction concreting. Basic element of the system is galvanized plate covered along the edge layer of the swelling polymer bentonite.

BETOFLEX plate is used by sealing construction joints in construction made by concrete on the joint:

- the bottom plate of the foundation wall (connection plate-wall)
- sequentially concreted sections of foundation wall, both vertically and horizontally (connection wall-wall)
- neighboring sections of foundation plate (connection plate-plate)

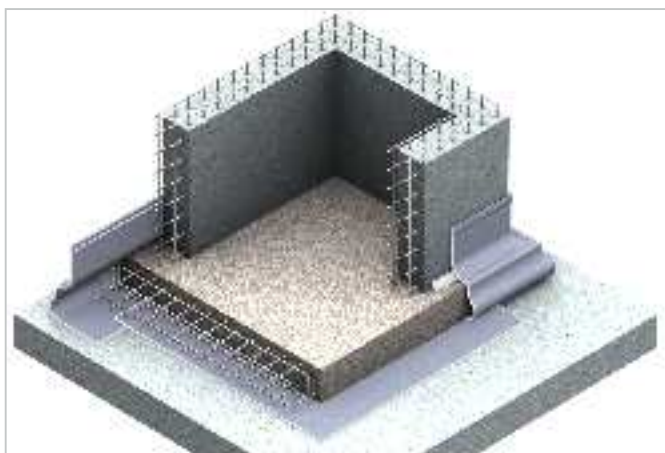
The BETOFLEX plate can be sealing element in broadly defined housing construction, construction services, sewage treatments plants, swimming-pools, tanks for liquids etc. Plate is mounted directly to the reinforcement plate and is fastening by the help of the special clamps in the shape of the letter 'Q'. BETOFLEX plate effectively seals construction joints loaded hydrostatic pressure till 0,28 Mpa.

APPROVAL AND CERTIFICATES

- Technical Approval ITB – No. AT-15-8928/2012
- Hygienic Attestation.



BENTHIZOL Mat HB



PRODUCT DESCRIPTION

BENTHIZOL HB is mineral, waterproofing bentonite-halloysite geomat with a self-sealing properties, used as active insulation against the water of underground parts of the building. Sealing layer on the influence of the water is swelling creating a homogeneous joint waterproofing barrier.

BENTHIZOL mats are used to waterproofing:

- plates and foundation walls in cubature objects
- ground building (levees, flood polders, water tanks, firewalls, channels, drainage ditches and linear drainage of the roads)
- infrastructural building (tunnels and underpass, sewage treatments plants tanks, liquid and solid landfills).

ADVANTAGES

- possibility of laying on the horizontal and vertical elements
- possibility of laying in the widely spaced excavation and on the constant cover trench
- lack of necessity special preparing of the substratum
- possibility of lying on compacted priming without the foundation of lean concrete
- possibility of use on the humid and wet substratum
- possibility of laying in all atmospheric conditions, also during the atmospheric rainfall and during the winter
- lack of necessity to use heavy equipment (width of the roll 2,1m)
- not require the protective layer and pressure layer
- it has self-healing of the damages properties (active insulation)
- for the water in terms of pH=4-9 effectiveness indefinite period of time.

MARKING AND ATTESTATIONS

- CE Mark
- Hygienic Attestation



The injection system P-100



PRODUCT DESCRIPTION

System of injection hoses P-100 is intended to making sealing in place of horizontal and vertical technological joints in concreting of the construction. Technical parameters of the injection hoses make that using of them is possible almost in each connectors in which there is dangerous penetration of the water by the partition.

The P-100 hose is built by rectangular flexible core, with situated centrally channel transporting the injected material. Special hose construction protect by flooded inside of transporting channels by the laitance during concreting of the element.

Thanks to small dimension of the hose's cross-section there is possibility of use the system on the joints of thin elements (the minimum buffer zone of the concrete can't be less than 7 cm).

System of injection hoses P-100 can be used as additional sealing in combination to the sealing tapes, i.e. swellable tape FORBENT.



Using of the injection hoses P-100



VALERO formwork mats



PRODUCT DESCRIPTION

Production of texture concrete by the help of VALERO mats is extremely simple and at the same time let to reducing the costs connected to performance decorative facades elements.

High strength and good springiness of the elastic material, of which are made the mats allows timbering out the elements with a deep texture and undercuts without matrix and concrete damages.

In the catalogue of the standard structures we can find variety circuits of the boards, ribs, texture of the plasterboards, clinker, broken stone, reliefs and many others.

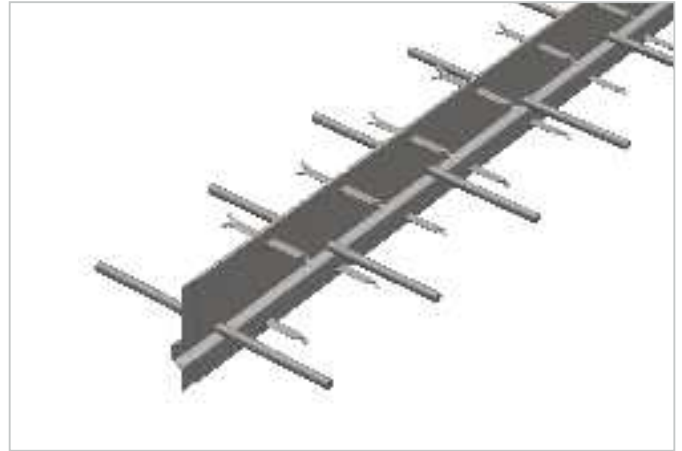


Control arrangement of the formwork mat

ADVANTAGES

- variety, recovery and enrichment of the surface
- reducing costs of performing the facade
- width range of the ready structures
- possibility of realization any patterns according to the individual project
- possibility of performing the elements in the precast company and on the construction site.

OMEGA dilatation profile



PRODUCT DESCRIPTION

OMEGA dilatation profiles are used to performing construction joints in concrete industrial flooring. They are made by steel plate in thickness 2 till 5 mm and 12 till 30 cm height. The profile is made by the specially profiled trapezoidal plates and bolts protective by keystrokes plates of the floor and providing very good adhesion profile to concrete. Protection of the plates inside there is self-adhesive butyl gasket. There is possibility of protection the profile by using anticorrosion paint or zinc cover. Mounting the profile is very easy that is i.e. by bolts welding to intermediate bars stuck in the under concrete.



Example of using dilatation profile OMEGA



Unloading platform



PRODUCT DESCRIPTION

Unloading platform is used to the material transportation between the different levels of the constructed buildings.
Platform was tested and has positive opinion of the Institute of Mechanized Construction and Rock Mining in Warsaw.

ADVANTAGES

- easy to transport (overall dimensions let to placement in a crate loading on a truck), possibility of transporting 4 pcs on a semi-trailer tractor unit or 2 pcs in a loading crate
- length around 6m
- we deliver it on a building place as a one element
- easy and fast assembly
- possibility of stacking in a warehouse
- possibility exchanging barriers in case of damage
- floor of the platform is made by non-slip plate
- after mounting the level of the platform is equal as the level floor level.



Unloading platform

Containers for concrete



TYPE OF CONTAINERS

- container for concrete - A type
- container for concrete - A/L type
- container for concrete - B type with work platform,
- container for concrete - C type



Container for concrete – B type with work platform



Container for concrete - C type

Containers for debris and loose materials



TYPE OF CONTAINERS

- container for soil and loose materials - A type
- container for debris - B type
- tip-up container - C type



Container for soil and loose materials- A type



Tip-up container- C type

Basket for the personal transport



PRODUCT DESCRIPTION

Basket for the personal transport is used to lifting and moving by the crane people with their equipment on each store of the realized object. There is possible also performing any other works, i.e., installation of lighting, performing the elements of facade etc.

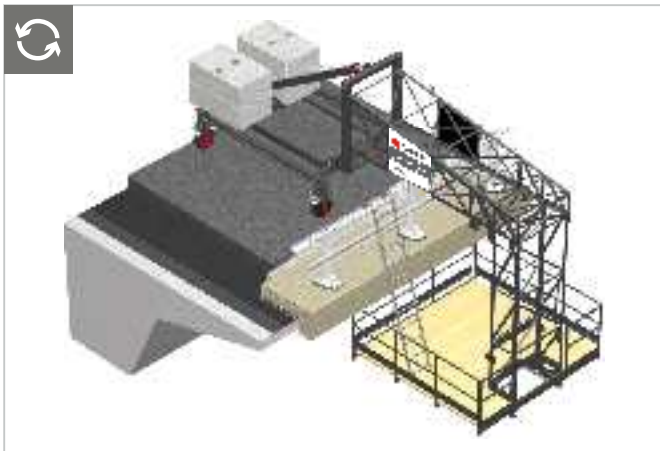
Baskets for transport



THE TYPES OF THE BASKET FOR TRANSPORT

Majority of the basket for transport (SECUMAX, A type, B type, C type) from our production are used to transport and storage of the building equipment. Their construction let for element's transport with total weight till 1200 kg. Basket for the transport for planks and the grids of SECUMAX system gives possibility of transport and storage of the planks (148 pcs) or protective grids (29 pcs.). Baskets for the transport used to storage building equipment (E and F type) are equipped in the tiltable and removable side. To storage small parts and even loose materials we recommend the universal container, which were made by profiled plate. To transport and storage of the supports, punches, girders was designed pallet onto the supports, which construction make the transport easier and faster at the destination place as well as within the building place. All of the basket are protected by zinc cover.

Assembly trolley



PRODUCT DESCRIPTION

Mounting trolley is used to revisions works below bridge plate, renovations or mounting works on the outside, side plane of the bridge plates (i.e. for repair or installation side cornice of the bridge plates) and mounting of wiring or pipelines mounted below bridge plate.



Mounting trolley during works on the viaduct

Mounting trolleys are available in several types and variety depends on the high and type of the construction from which is made the bridge, and also type of the works, which may be made by using working platform.



Products for the construction of the bridges



DISC ANCHORS

Disc anchors are steel elements, which constructions make possibility of connection concrete elements of construction, between which there is insulation layer. This solution make possibility of much faster and comfortable realization i.e. construction process of the paving covers, providing at the same time required bearing capacity and tightness of connection to the bridge construction.



The disc anchors type I embedded in bridge concrete reinforcement

POINT ANCHORS

Connecting anchors four and sixth points make possibility mounting in the concrete element the construction of the items of equipment such as energy-intensive barriers, soundproofing, pillars of the bridge railing etc.

FORMWORK BRACKETS CORNICE

Formwork brackets cornice are elements which let us performing the formworks and concreting the cornices in the engineering objects. Brackets are mounted to the supporting structure by the system of anchoring elements FORBOLD-K.



Structural elastomer bearings



PRODUCT DESCRIPTION

Elastomer bearings are made by alternately stacked layers of elastomer and from steel plates which strengthening it. During the process of vulcanization, both of the materials are together chemically connected. Thanks to that, bearing is resistance for shear and compressive.

Apart from typical, blocks of elastomer bearings, we offering a wide range of elastomer bearings with supportive structures or anchoring plates.

Elastomer bearings is equipped in additional steel constructions called supporting structures, which using let us to transferring significant horizontal forces and depends on structure resistance elements, prevents sliding (fixed bearing) or allows sliding:

- in one direction (one-way bearing sliding longitudinally or transversely),
- on each direction (unmovable fixing bearing).

Elastomer bearings offered by FORBUILD meet the requirements of European Standard PN-EN 1337-3, successfully passed the certification test, thanks that possess the appropriate certificate of conformity and have CE mark.



Elastomer bearings on the bridge over the A2 motorway

CERTIFICATES AND APPROVALS

- Certificate of Conformity in force in the European Community- No. 0432-CPD-223604/1- Elastomer bearing type A, B and C
- Certificate of Conformity in force in the European Community- No. 0672-CPD-002.2-Pot bearings.



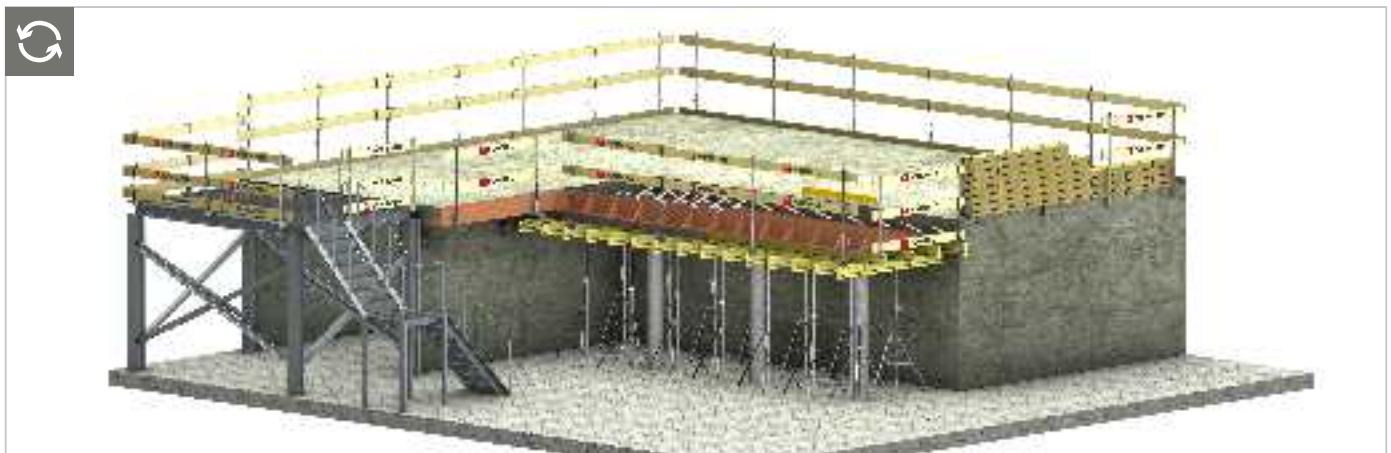
Formwork panels bridge with elastomeric bearings



Elastomeric bearings prepared to mounting



Temporary protection on the Edge system SECUMAX



PRODUCT DESCRIPTION

The system of the protective handrails SECUMAX provide complex protection on the edges, which much more increase safeness of the people who are working on the building place.

Large election of the mounting brackets make that system is extremely versatile and can be used both in general construction and also in bridge and road construction and in hydro-engineering construction on each stage of execution of works. It lets for complex protection the edge on the whole territory of construction: open edges of the building, flat roofs, bridge objects, excavations, traffic routes and other dangerous areas.

It let also to optimize costs and make sorter the time of mounting the protective handrails required by Health and Safety Regulations.



Application of the Secumax system on the construction of the housing estate



The use of safety nets for the construction of a skyscraper

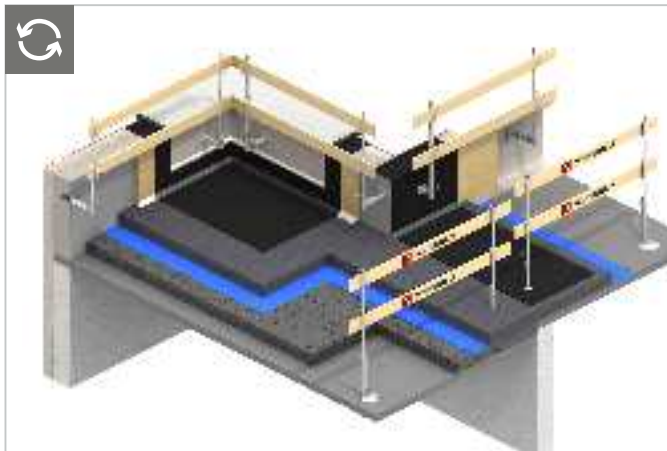
A class of the system protection on the edges provide protection of person who is based on to security, it gives possibility to hold on the protection while going next doors (as a handrail) and can stop a person who falls in the direction of security.

The System of protective barriers SECUMAX meets the requirements of endurance class A identified in the standard PN-EN-13374 and remains in compliance with applicable laws. It means that mounted according to producers recommendations gives guarantee of safety work and provide protection all of people who are working in the area.

SECUMAX system, checked in practice on the hundreds of construction sites in Poland and abroad were awarded statuette TOP BUILDER 2013.



SECUMAX INDIVIDUAL



PRODUCT DESCRIPTION

SECUMAX INDIVIDUAL system allows for complex performing of individual protection, which protect working person before fall down during the work on the heights. Using the elements of the system allows performance protection based on requirements of the standard PN-EN 795.

Grips and sockets of SECUMAX INDIVIDUAL system, which are points of anchoring security equipment before fall down from the heights have stable structure and provides constant connection to the other of the element of equipment.



The SECUMAX INDIVIDUAL elements on the roof of the parking

Besides its basic function - creation of individual protection, SECUMAX INDIVIDUAL system gives possibility of temporary protective barrier, meets the requirements standard PN-EN 13374. By using standard elements of SECUMAX system (side handle, barrier pillar, plank or protective net) we have in fast and easy way temporary collective protection against fall form height.



SECUMAX RAIL



PRODUCT DESCRIPTION

The system of protective handrails SECUMAX RAIL is used to protection active railroad tracks and is a complex protective balustrade which is temporary side protection during the renovation or modernization railroad tracks. The long term of using of the steel elements (handle and barrier pillar) ensure durable anticorrosion coat .

The system of protective handrails SECUMAX RAIL meets the requirements set by PKP Polish Railways S.A. according to annex to ordinance No. 21/2010 of Management PKP PLK S.A. from the day 31-st of August 2010.



The SECUMAX RAIL mounted on the trackway



Formwork accessories



DESCRIPTION OF THE GROUP OF PRODUCTS

The FORBUILD company offering a wide range of formwork accessories necessary on each construction site, which are compatible to most of available formwork systems.

No matter if you need steel tie bars, anchoring or lost formworks, in our offer you'll find reliable, checked and the best solutions such as:

- treated formwork ties
- tie bars covers (distance pipes)
- cones, end caps, seals, stoppers, coupling etc.
- water partitions
- washer and nuts to pull the shuttering panels
- chamfering strips
- corrugated anchors, hook anchors, loops, anchoring shallows, expansion anchors
- and many others necessary elements.



Transition to tie bar with distance pipe



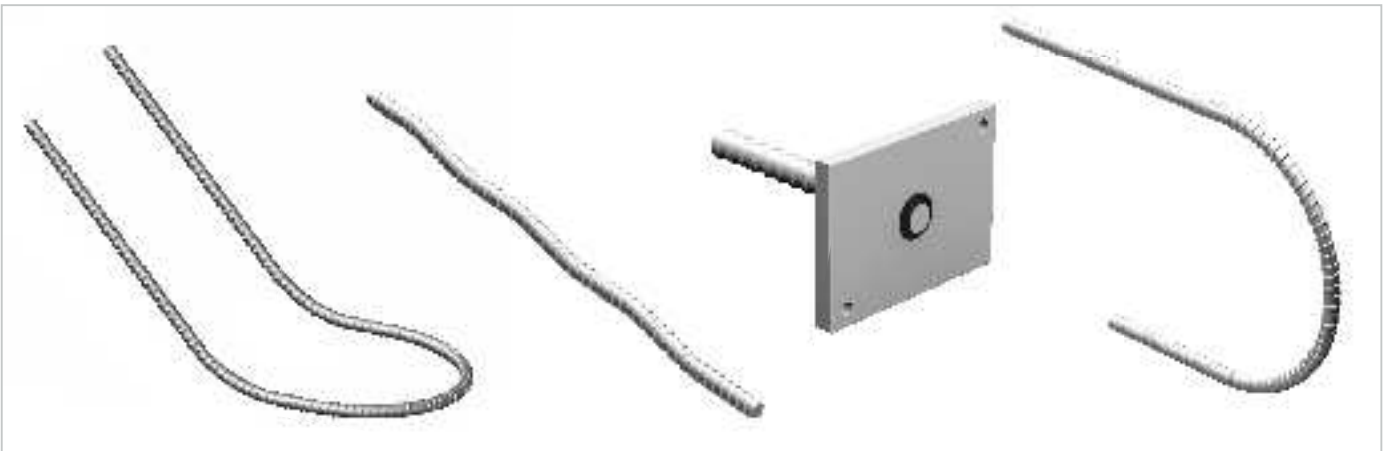
Using of the articulated nut KP-S B15



Using of the water partition



Formwork accessories



DESCRIPTION OF THE GROUP OF PRODUCTS

Our company is producer a wide range of formwork accessories compatible to elements which have B15 thread. Those products are used as one-side anchoring, elements fixing formwork plates to the bottom plates and formwork tie bars.

We offer the following solutions:

- threaded tie bars type B
- threaded tie bars type SGS
- corrugated anchors
- hook anchors
- anchors with slab
- anchoring loops



Thread tie bars B15 and SGS (with self-cleaning thread)



Thread tie bars B15 prepared to transport



Using of the anchoring loop



Distance spacers



DESCRIPTION OF THE GROUP OF PRODUCTS

Spacers (from concrete or plastic) are used to provide required thickness of concrete cover from reinforcement bars in reinforcement construction and construction elements.

In our offer you may find reliable, checked and the best products such as:

- concrete spacers (point and linear)
- plastic spacers (point and linear)
- steel ladders spacers ZET type

Steel ladder spacers ZET type are used as spacers elements between upper and lower layer of reinforcement concrete.



Using of point spacers PADIX



Using of FB bone point spacers



Using of concrete linear spacers



Precast accessories



TRANSPORTATION ANCHORS

Transportation anchors are used to lifting of the precast elements. They take all influence, which are during the transportation, lifting or mounting of the precast, that's why reliability is so important. Transportation anchors offered by the FORBUILD company are made from the materials in the highest quality.

MOUNTING PLATES

Mounting plates have a variety of use, especially are used by the mounting heavy ready elements of the construction from precast, mounting of the steel halls, sheds, arbours and many others. Mounting plate maintained structure until the mortar dries or can be spacers between the surface, which shouldn't joint.



Mounting plates

DISTANCE SPACERS

Distance spacers are used to provide required thickness of the concrete cover of the reinforcement bars in concrete reinforcement constructions and in construction elements. They distance reinforcement bars from the form by the help point footer, what let to accurate covering by the concrete.



The chambering strips mounted inside the formwork

THE CHAMFERING STRIPS OF THE EDGES DREIKA

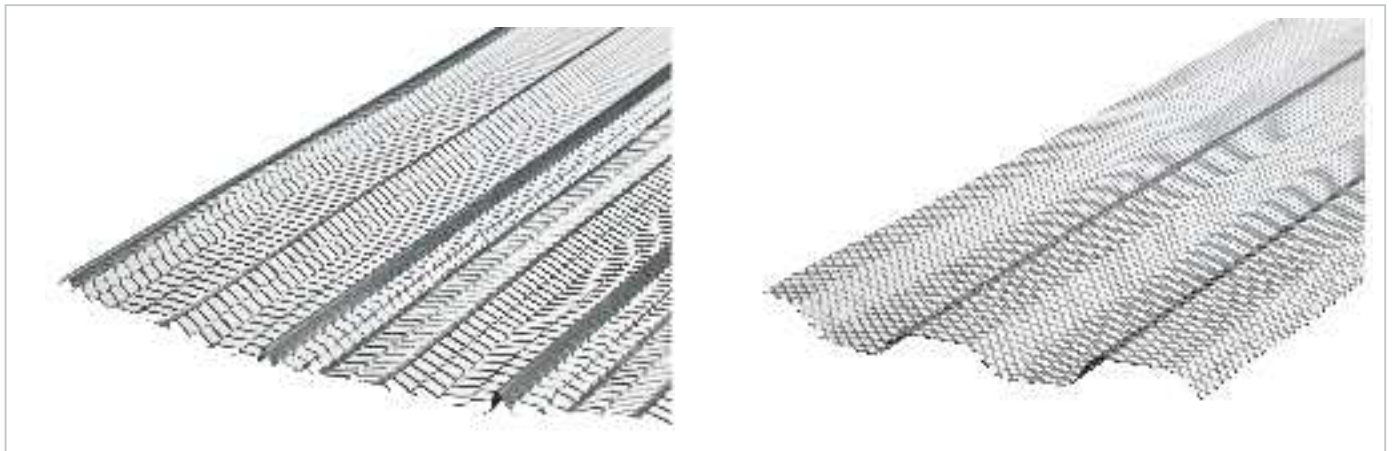
The chamfering strips are profiles made by impact-resistance plastic. Nailed to the formwork are used to obtaining chamfered at an angle 45° of the edge of the walls, pillars, bricks etc. Additionally triangle strip with belt has holes for nails.

The types of chamfering strips

- Triangle strips- 11 ÷ 30 mm
- Triangle strips with a belt-10 ÷ 30 mm
- Strips for joints in a shape of 'T' letter.



Lost formworks



LOST FORMWORK STC

Lost formwork STC is the lost element used to construction joints in concrete reinforcement constructions. Thanks to porous structure of the plate, there is provided optimal connection to concrete. Trapezoidal profile protect by the effect of keystrokes effect of adjacent plates, poured out in the different stages of works.

Lost formwork STC is the lost element, after finishing concreting works is not recovered, it stays in the element.

STC formwork is mounted between the upper and lower reinforced concrete of reinforcement element- till the height 30 cm is self-supporting, above there is requirement supporting construction. The heights above 1,20 m are obtained by connecting subsequent sheets by metal sheet screws.

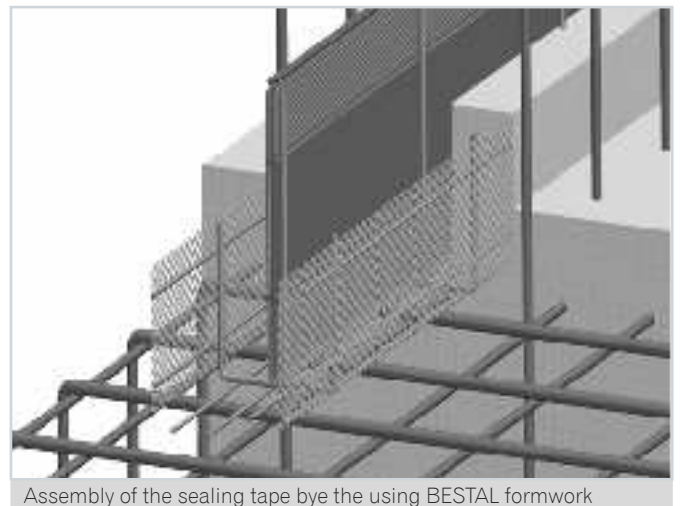
LOST PROFILED FORMWORK STP

Formwork STP is used to construction joints in concrete reinforcement constructions. Gear construction joint with profiled shape eliminate keystrokes phenomenon adjacent reinforcement concrete plates and guarantee sealing of the construction joint. STP

The height above 1,20 m are obtained by connecting subsequent sheets by metal sheet screws. It's ideal in connection to injection system P100 or swelling tape FORBENT.

STP DUPLÉ

STP DUPLÉ is used to shaping construction joints foundation wall exposed on pressurized water with used inside sealing tape. It has special designed clamps made to stabilize location and correct assembly of the tape.



Assembly of the sealing tape by the using BESTAL formwork

BESTAL

Lost formwork BESTAL is used to symmetric composition inside sealing tape in the axis of construction joint, generally on the connection wall and foundation plate. BESTAL formwork has special designed clamps make to stabilize location and correct assembly of the tape and allows concreting the tape exactly in the middle of their height.



Light lost formworks



LIGHT LOST FORMWORKS

Light lost formworks are made by profiled plate and are used mainly by performing the concrete reinforcement elements such as:

- foundations
- spread footings
- poles
- holes (pipes to hollows).

Over press of the plate let for high stiffness of the formwork and make mounting faster and easier. The element can be manually molded on the construction site. The formwork is self-supporting (not require additional support). Thanks to unusual lightness and practical using of the system costs of the realization the elements can be reduced.

Long term experience of the company in this area resulted in wide range of the products, their high quality and innovatory solutions.

Steel formworks are in the following variations:

- Vario50 and Vario100 system
- Formwork FKF easy and FKVF
- Systems FS 2001 and FS 2001 light type
- AR-FLEX pipe with possibility of bending
- AR pipe- rigid pipe

ADVANTAGES

- fast mounting of the formwork, not necessary heavy equipment
- formworks are mostly self-supporting
- connection sheets of the plates by the help self- thread screws, metal sheet screws or binding wire
- cutting the element to the size by the using grinder with disk to cutting metal
- possibility of manually molded on the construction site.



Vario system

CARTON FORMWORK

Are used as lost formwork by performing round poles with a smooth surface. Carton formworks are made by waterproofing, impregnated and laminated carton bonded at high pressure.



Chemistry to concrete



ANTIADHESIVE LIQUIDS

It react to concrete by making layer which protect by binding concrete to the surface of the form. It allow for obtainment smooth and uniform concrete surfaces without any stains and surface damages. It reduce costs of cleaning and conservation of the forms-with repeated use of the forms become self-cleaning. Depending on the needs, in addition to conventional antiadhesive agents produced on the base of solvent and petroleum in offer FORBUILD company there are also biodegradable products.

DEACTIVATORS

Deactivators allows delay binding concrete on the Surface directly joint to the form. Kind of the agent can be precisely chosen for the planned thickness of rinsed leaven, depends on the grain size of aggregate. After rising leaven by the water is obtained surface with exposed (uncovered) aggregate. The scope of using:

- concrete facades plates with exposed aggregate
- the elements of small architecture of streets and gardens, i.e. benches, seats, tables, playground equipment, fountains, etc.

IMPREGNATES

Impregnates penetrate deep into the ground, creating on the surface durable coat protective against the water. It protects also the concrete surface against dirt among the others from oils, fats. Depends on the kind of used agent, surface which was covered by impregnate can gain new 'freshness' look, sometimes even light shine. In case of some liquids-applied preparation doesn't change the natural color of the surface and is totally invisible.

PROTECTION AGENTS TO FRESH CONCRETE

C1 protective primer agent form transparent coat and protect fresh concrete against premature drying. It has primers properties, makes the surface stronger and increase adhesion to smoothing compounds, paints and plastering mortar.

DISPERCER REINFORCEMENT

Steel fiber of innovative curved ends of the fibers providing better anchoring in concrete, which translates into higher resistance to flex cracking of concrete reinforcement with steel fiber compared to traditional fiber or mesh reinforcement. The fiber is used with reinforcement i.e. industrial floors or communication surfaces.

Polipropylene fiber to structural concrete reinforcement reduces, and at some cases completely eliminate plastic cracks caused by shrinkage of the concrete. Used as a concrete adds by realization industrial floors, concrete screeds, concrete reinforcement precasts.



Fiber dispercer reinforcement TECHNOfIBER





LEASE OF THE EQUIPMENT



Lease of the construction and Health and Safety equipment



GENERAL INFORMATION

In response to numerous inquiries from our clients, the FORBUILD company few years ago decided to create Warehouse of lease of construction and Health and Safety equipment. A large group of customers have trusted us so far. Among them you can find the biggest construction companies in the country.

At this moment we offering lease of:

- mounting trolleys
- the elements of protection system on the edge SECUMAX
- unloading platforms
- containers for concrete

Our device is continuous development, because of that incessantly we are trying to developing and improving the product base so that in possible comprehensive way protect necessity of our clients.



Transport of construction equipment



LEASE OF THE MOUNTING TROLLEYS

We have in our offer mounting trolleys to performing inspection works under the slab of the bridge, repair or installation on the outer side surfaces of the slab of the bridge (i.e. to repair or installation of bridge cornices of the side plates) and installation of wiring or pipelines installed under the bridge slab.

To all interested by lease, we will gladly provide any necessary information about condition and costs connected by lease service and delivery equipment to the designated place.

ADVANTAGES OF LEASE

- mounting of the product by qualified FORBUILD team
- delivery in 48h.



Mounting the trolley on the bridge



Lease of the construction and Health and Safety equipment



LEASE OF THE SECUMAX PROTECTION SYSTEM

Our system was used by more than 400 clients and among them you can find the biggest construction companies in the country. A large percentage of users are leaseholders. Leased equipment supports about 200 construction sites all over Poland and protect more than 60 thousand r.m. of the edges of the object each type.

ADVANTAGES OF LEASE

- full service by the side FORBUILD (transportation, repairing, cleaning and conservation)
- possibility of mounting commission
- distribution of security costs during construction
- lack of the storage costs off the season
- repair of the elements returning from lease



LEASE OF THE SECUMAX RAIL PROTECTION SYSTEM

The SECUMAX RAIL system is our innovatory solution, which used to performance to side protection during renovation, modernization or construction of railway lines. The SECUMAX RAIL system meets construction requirements according to: Annex to ordinance No. 21/2010 Management of PKP PLK SA from the day 31-st of August 2010.

ADVANTAGES OF THE SYSTEM

- easy and fast assembly
- to use on all of type of railway rails
- stability (vibration resistance)
- reliable fastening mechanism
- possibility of use within crossovers
- flexible extension handle provides performing of protective balustrade in the distance till 2850 mm calculated from the truck center
- protected by durable anticorrosion coating



Repair of the elements returning from lease



Assembly of the SECUMAX RAIL protection system on the trackway



Lease of the construction and Health and Safety equipment



LEASE OF THE UNLOADING PLATFORM

Unloading platform is used to the transport of the materials between different levels constructed buildings. Platform was tested and received positive opinion of the Institute of Mechanized Construction and Rock Mining in Warsaw.

ADVANTAGES

- fast and easy assembly
- after mounting the level of the platform is on an equal footing to the level of the floor
- there is possible mounting between the floors and on the top of floor



Preparing to transport 4 unloading platform



LEASE OF THE CONTAINER FOR CONCRETE

Containers for concrete by the FORBUILD company characterizes high durability and high quality. Are made from attested steel, of cold-rolled sheet and closed profiles, which protect high stiffness and durability with a minimal dead weight.

ADVANTAGES

- easy transport
- durability and strength
- huge immunity for hard atmospheric conditions- anticorrosive protection
- in offer there are container of different capacities.



Transport of container for concrete



Gallery



Production of BARTEC connections, construction of the power station in Opole



Concrete reinforcement banded BINDAX, construction of the parking in Cracow



Construction bearings, construction the A2 motorway



SECUMAX system, construction of the museum in Katowice



Mounting of sealing, treatment plant in Warsaw



SECUMAX system, rebuilding of the road in Warsaw



Installation of protective barriers SECUMAX RAIL on the trackway



Mounting of the construction bearings, construction of the road S8

Gallery



BARETEC connector, construction of skyscraper in Warsaw



Installation of balcony connectors on the construction site



Unloading platform, construction of skyscraper in Warsaw



Installation of protective nets, construction of Warsaw Spire



Mounting of sealing, construction Castle gallery in Lublin



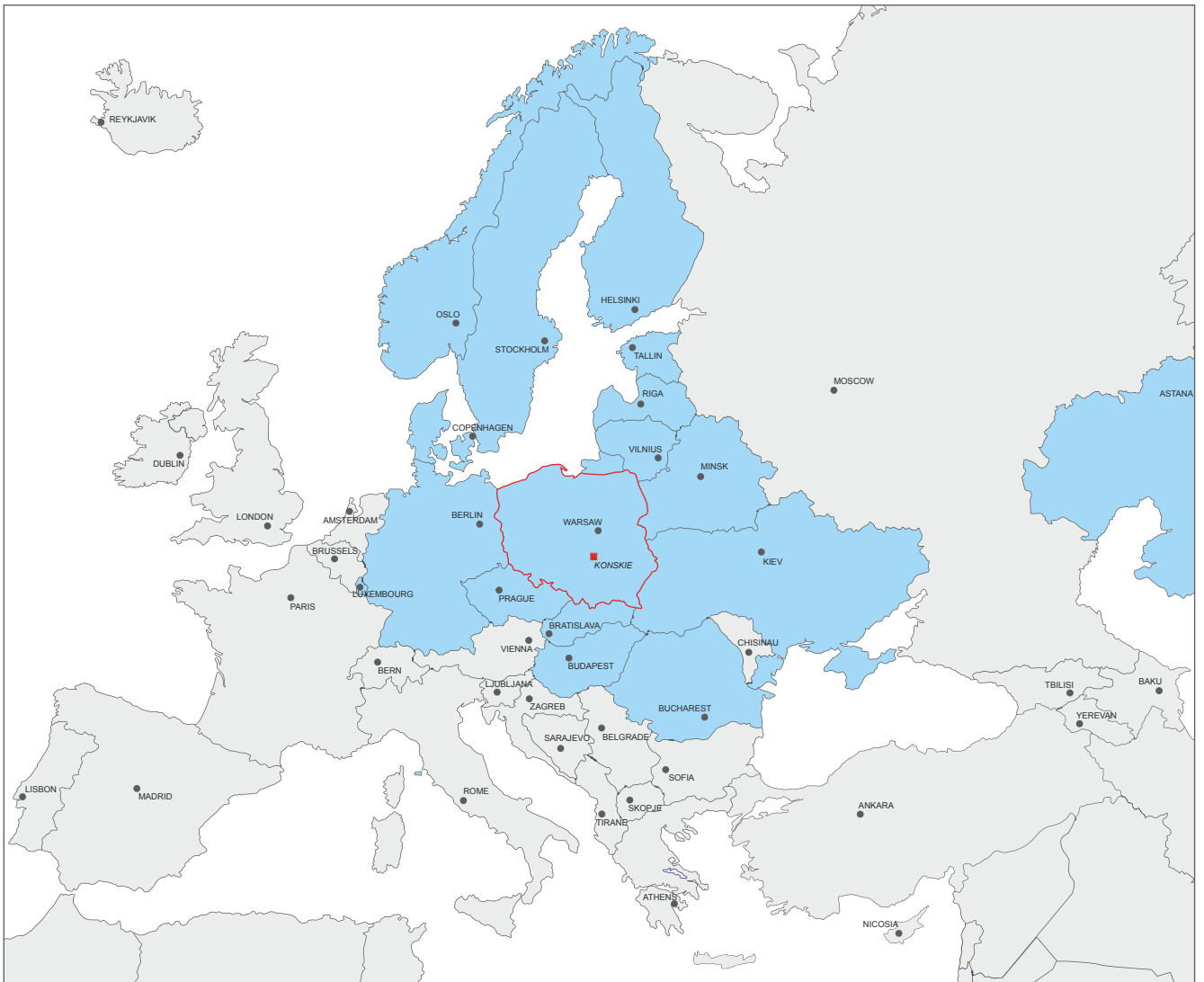
Mounting of sealing, construction of transport hub



Mounting of sealing, construction The Second World War in Gdańsk



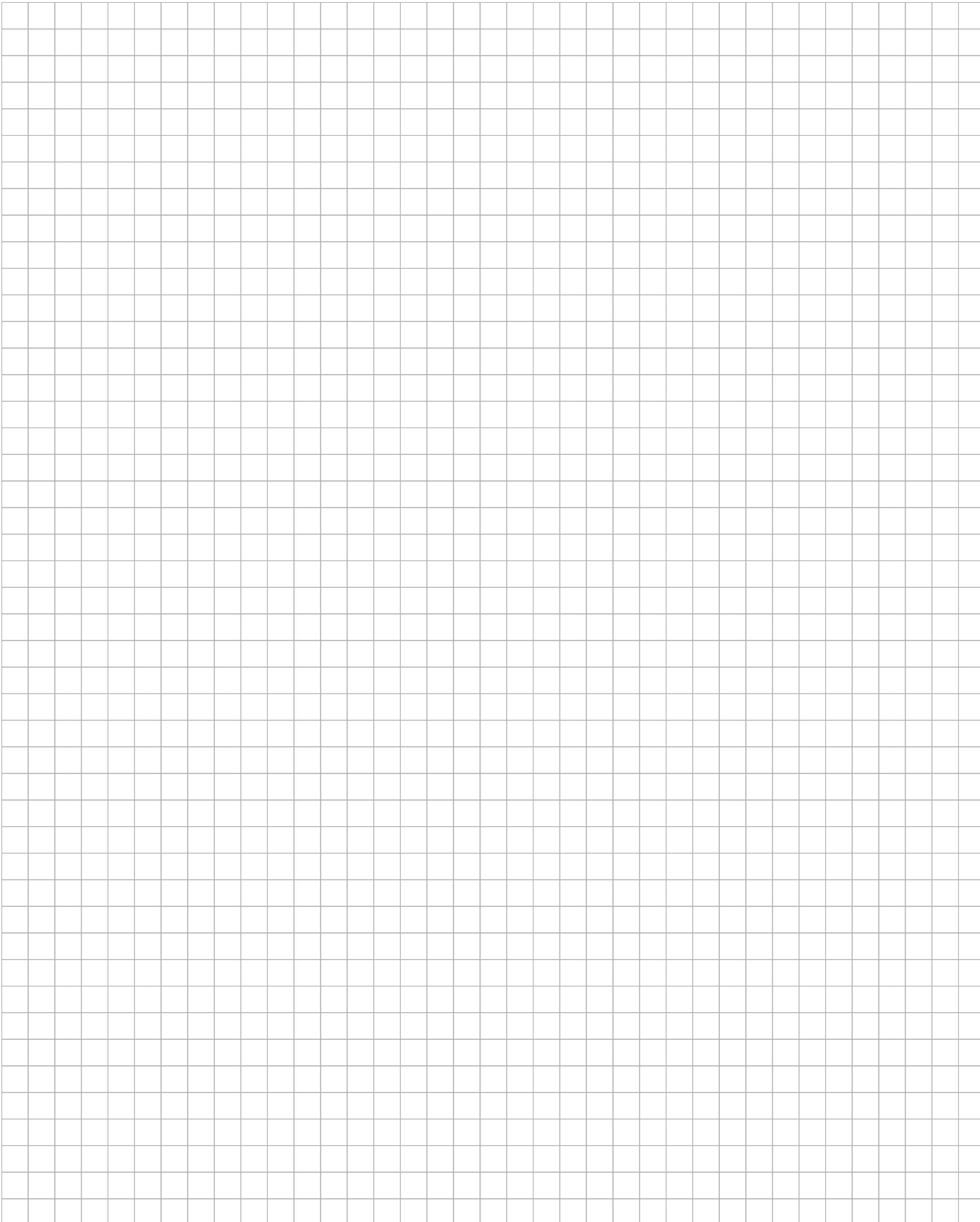
Installation of SECUMAX berries, construction of a factory in Gliwice



NOTES

A large grid of graph paper for taking notes, consisting of 20 columns and 40 rows of small squares.

NOTES





FORBUILD SA

ul. Górna 2a, 26-200 Końskie

T: +48 41 375 1347

F: +48 41 375 1348

forbuild@forbuild.eu

www.forbuild.eu